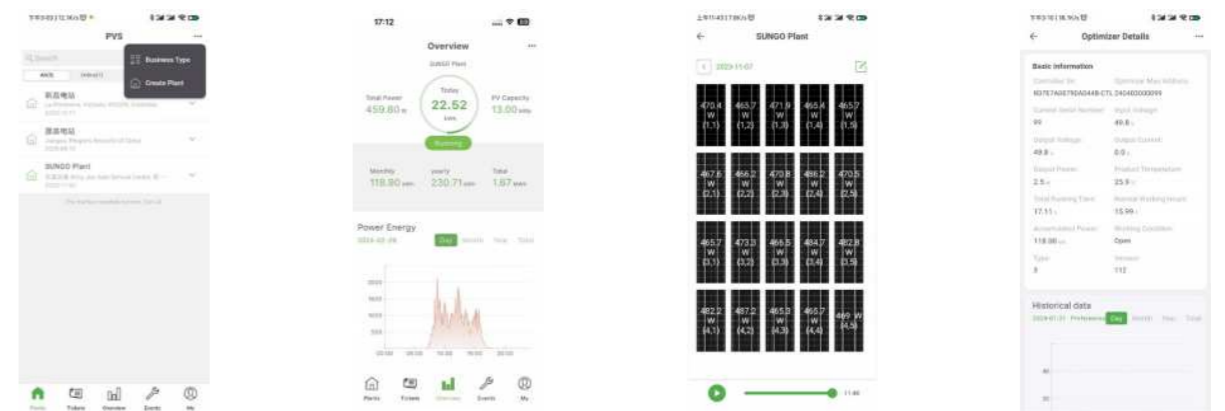


Smart Management System iSungo

Intelligent Operation and Maintenance
Better Experience



App



Station interface for creating new stations and viewing station information

Core data presented succinctly and at a glance

PV Module Layout View
Module Information Status

Optimizer details are used to view the status of optimizer information

Web

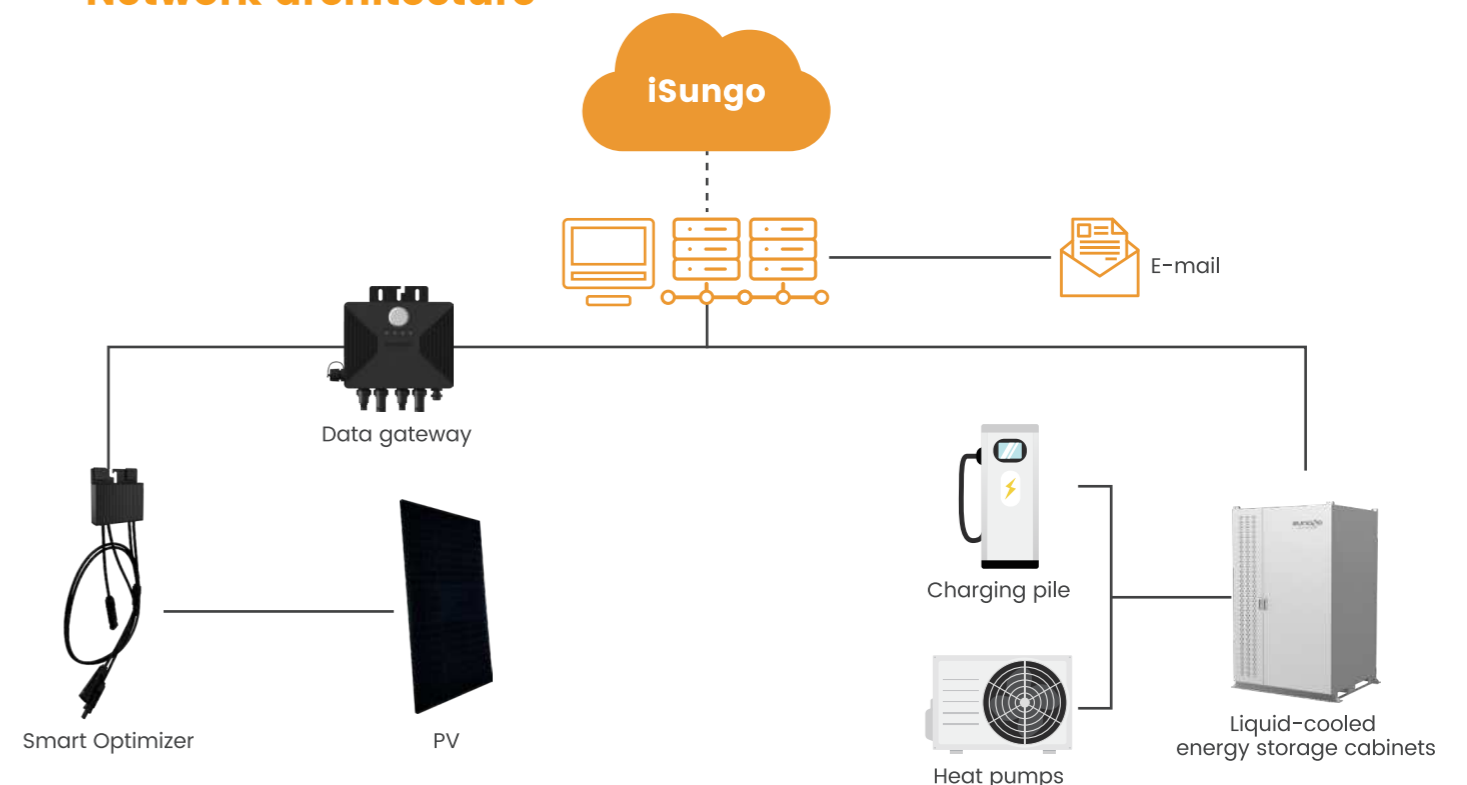


Multi-view display at a glance, easy to manage all your power stations

Fast access to component-level performance data to pinpoint component problems

View current and historical data by day, week, month, and year, with earnings automatically calculated

Network architecture



Features

- Intelligent management, data at a glance
- Module-level data management for easier operation and maintenance
- Comprehensive control of power station operation to realize maximum benefits
- Remote fault analysis to reduce O&M costs

